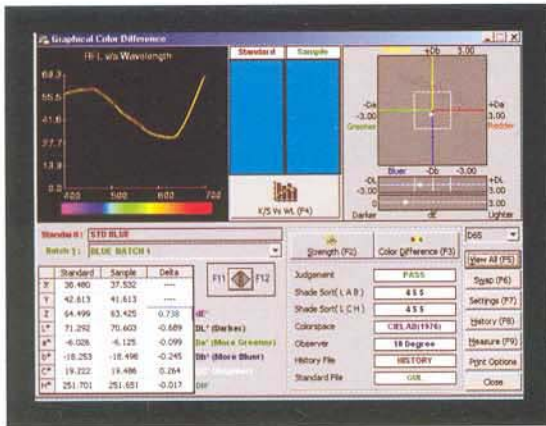


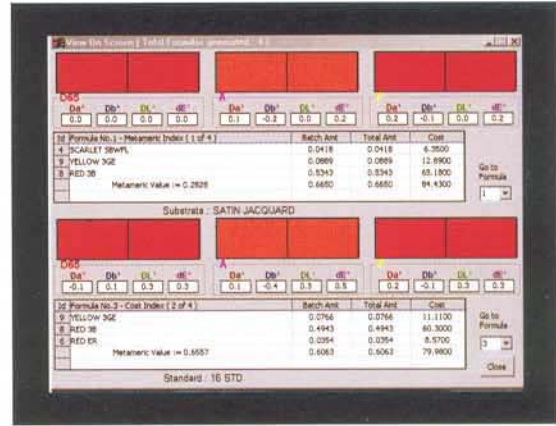


PREMIER COLORSCAN

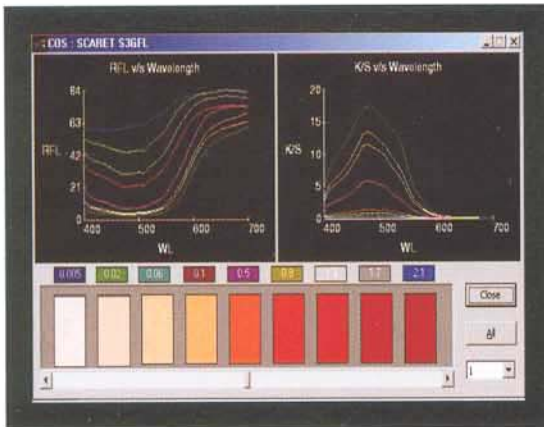
COLORLAB+ Color Matching System



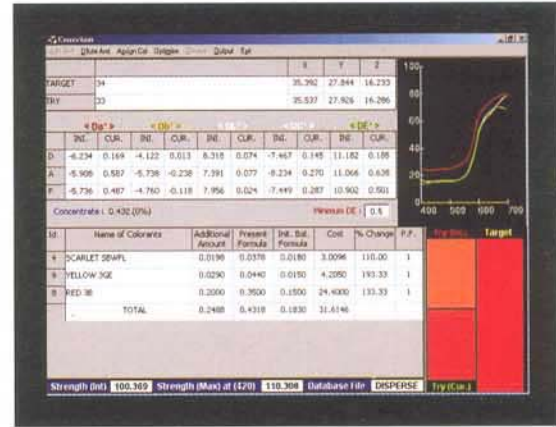
Quality Control



Formulation



Database



Batch Correction

More than 600 satisfied customers all over the world



EXCELLENT BACK-UP SUPPORT

- ☐ WORLDWIDE AGENT NETWORK. ☐ QUALIFIED AND EXPERIENCED APPLICATION SPECIALISTS.
- ☐ QUALIFIED AND EXPERIENCED HARDWARE ENGINEERS. ☐ EXCELLENT SOFTWARE DEVELOPMENT TEAM.

SPECTRUM OF SOFTWARE

• One Constant • Two Constant • Transmission

QUALITY CONTROL

OUTPUTS

Color Difference
Colorant Strength
Whiteness
Yellowness
Brightness
Spectral Data
CIE Diagram
Gray Scale AATCC
Gray Scale ISO 105
Staining Scale AATCC
Staining Scale ISO 105
Contrast Ratio
Pass / Fail
555 Shade Sort
Color-on-screen
Metamerism Index

COLOR SPACES

C.I.E.L*a*b*
FMC II
HUNTER L a b
C M C 2:1/1:1
ANLAB 50
CIE 94
BFD

OBSERVERS

2 Deg.
10 Deg.

ILLUMINANTS

D 50
D 65 CIE daylight
D 75
A Incandescent
C CIE Average daylight
F3 CIE fluorescent light
CWF Cool white fluorescent
TL 84 Showroom Illumination
UL 30 Ultralume
Horizon

STRENGTH ANALYSIS

At wavelength of maximum absorbance
At user selected wavelength
Integrated strength
Saunderson Corrected strength
Adjusted color difference with space diagram

INDICES

Whiteness Indices	Yellowness Indices
Stephensen	ASTM D1925
Harrison	ASTM E313
Berger	
Stensby	Brightness Indices
CIE	TAPPI
Hunter	ISO
ASTM E313	
Ganz	

FORMULATION

Least Cost Recipes
Least Metameric Recipes
Opacity / Loading predictions
(For two constant only)
Formula-on-screen

CORRECTION

Reformulation
Batch Correction
Automatic / Manual add
Waste Correction

GROUPING

CURVE GENERATION
DYESTUFF/PIGMENT BLENDING
MELANGE FIBRE BLENDING
SHADE LIBRARY

APPLICATION

Apparel	Cosmetics	Ink	Pigments
Appliances	Dyestuffs	Leather	Plastics
Automotive	Fibres	Optical Brightner	Rubber
Business Machines	Floor & Wall Tile	Packaging	Textiles
Carpet	Food Color	Paint	Thread
Ceramic	Glass	Paper	Yarn
Chemicals	Graphic Arts	Pharmaceuticals	



PREMIER COLORSCAN INSTRUMENTS PVT. LTD

SAMATA NAGAR, BUILDING 1, POKHRAN NO.1, P.O. JEKEGRAM, THANE (W) 400 606, INDIA.
TEL.: +91-22-2534 9313, 2533 0429, 2537 5683, 2541 2210, 544 0339 | FAX: +91-22-2534 4922
E-MAIL : pci@vsnl.com / colorlab@premiercolorscan.com

www.premiercolorscan.com